

YOUTH.sg:

The State of Youth in Singapore

Youth and Their Enduring Bonds



© Copyright 2021, National Youth Council

All rights reserved. No part of this publication may be reproduced in any material form (including photocopying or storing it in any medium by electronic means and whether or not transiently or incidentally to some other use of this publication), republished, uploaded, posted, transmitted or otherwise distributed in any way without the prior written permission of the copyright owner except in accordance with the provisions of the Copyright Act (Cap. 63).

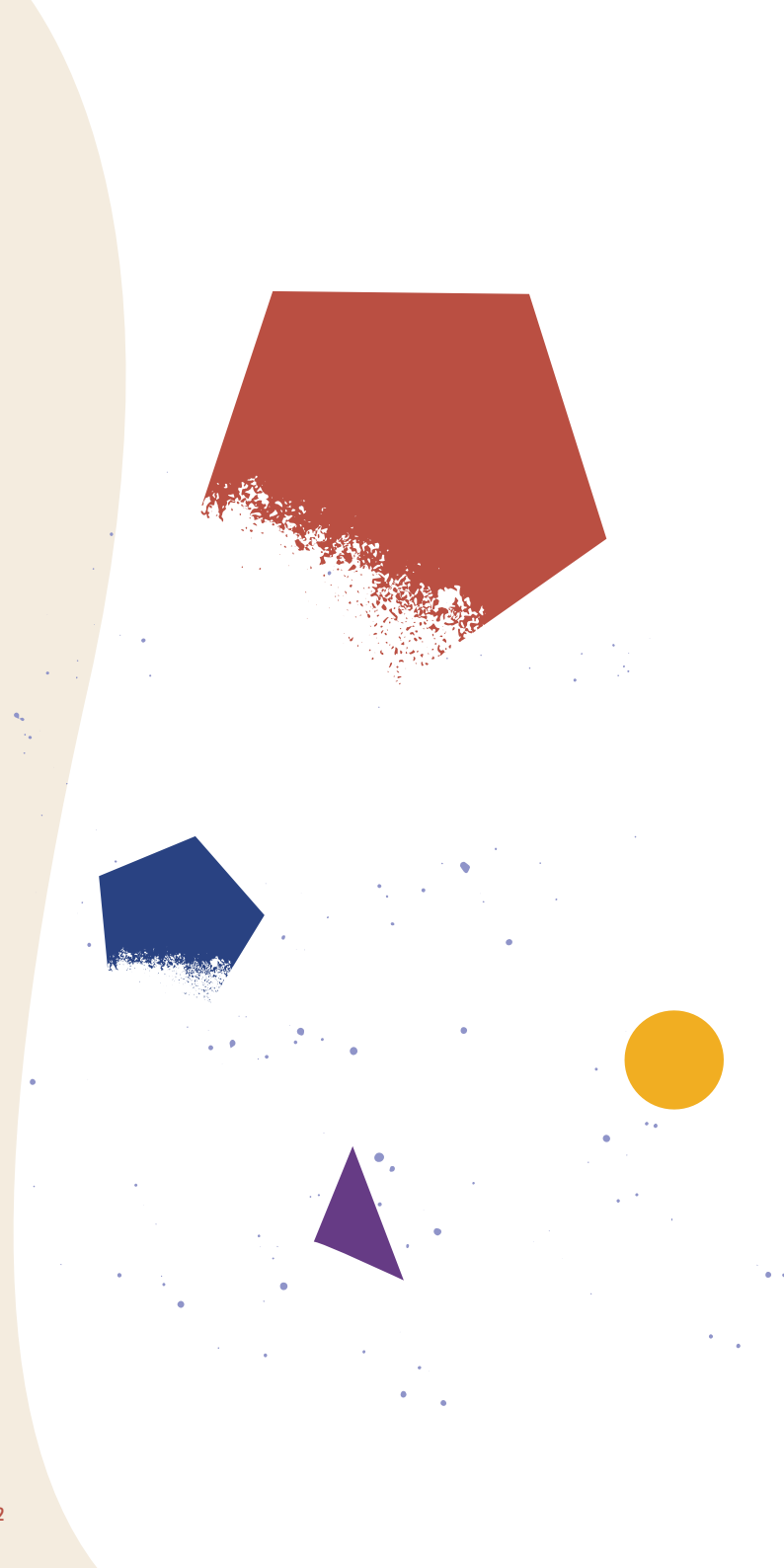
ISBN: 978-981-14-9546-5

Disclaimer

The chapters compiled in this publication affirm the National Youth Council's (NYC) commitment to contribute towards building the nation's knowledge of youths in Singapore. NYC makes every effort to ensure the accuracy of the information contained within this publication, but makes no claims, promises, or guarantees about the accuracy, completeness or adequacy of the information contained in or linked to the chapters.

The information and views set out in this publication are those of the authors and do not necessarily reflect the opinion of the NYC, and their publication here does not constitute an endorsement by the NYC. Neither the NYC nor any persons or agency acting on their behalf may be held responsible for any use which may be made of the information contained therein. Individuals should respect the Intellectual Property Rights of the authors, and are advised to seek independent verification of such data should there be any concern with the accuracy of information published here.

Published by the National Youth Council





WE HEAR **Y**OUTH
HERE FOR **Y**OUTH

At NYC, we believe in a world where young people are respected and heard, and have the ability to influence and make a difference to the world. Together with our partners, we develop future-ready youth who are committed to Singapore by instilling in them a heart for service, resilience and an enterprising spirit.

■ Our Vision

Thriving youth who are **Future-Ready** and **Committed to Singapore**

▲ Our Mission

Create **Opportunities for All Youths in Singapore**

To be **heard**, to be **empowered** and to be **the change**

● Our Background

NYC was set up by the Singapore Government on 1 November 1989 as the national co-ordinating body for youth affairs in Singapore and the focal point of international youth affairs.

On 1 January 2015, NYC began its operations as an autonomous agency under the Ministry of Culture, Community and Youth (MCCY) and housed two key institutions: Outward Bound Singapore (OBS) and Youth Corps Singapore (YCS). Together, the agency drives youth development and broadens outreach to young Singaporeans and youth sector organisations.

Mr Edwin Tong, Minister for Culture, Community and Youth and Second Minister for Law is the Chairperson of the 16th Council. The Council comprises members from diverse backgrounds such as the youth, media, arts, sports, corporate and government sectors.



Preface

The National Youth Survey (NYS) studies the major concerns and issues of schooling and working youths in Singapore. It is a time-series survey that tracks and provides updated analyses of national youth statistics and outcomes to inform policy and practice. To date, NYS has been conducted in 2002, 2005, 2010, 2013, 2016, and 2019. Findings and analyses from each cycle of NYS are subsequently published as YOUTH.sg: The State of Youth in Singapore (YOUTH.sg).

This edition of YOUTH.sg consists of six separate issues covering the topics of



**Values &
Attitudes**



**Education &
Employment**



**Social
Support**



**Social
Cohesion**



Wellbeing



**COVID-19
(Special Edition)**

Each issue features youth statistics and insights from the NYS. Complementing the NYS insights are relevant studies and in-depth analyses by practitioners in youth research and development to provide readers with an overview of the state of youth in Singapore.

Contributors comprise NYS' academic collaborators (A/Ps Ho Kong Chong, Ho Kong Weng, and Irene Ng), NYC, Youth STEPS' academic collaborators (Dr Chew Han Ei, A/P Vincent Chua, and Dr Alex Tan) and other contributors (Ministry of Manpower, National Arts Council, National Volunteer & Philanthropy Centre, and Sport Singapore). Together, the YOUTH.sg intends to shed light on and explore specific emergent trends and issues of youths.

**This publication has been put together by the Research team at the
National Youth Council.**

Notation

NA Not Available

Notes

Percentages may not total up to 100% due to rounding.

Survey figures may vary slightly due to sample weighting.

Social Support

Social support refers to the availability and perceived degree of support that youths receive from significant others (e.g., family, friends, partners) in their lives, and is especially salient during times of intense change and uncertainty. The support a young person receives from their family environment as well as the strength and diversity of their social networks are pivotal in influencing youth development, wellbeing, and their ability to thrive in the face of adversity (Southwick et al., 2016).



Social Support

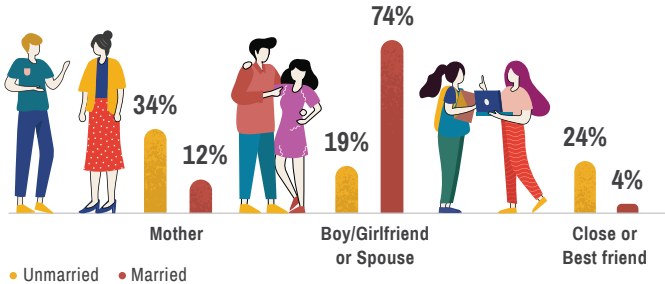
As the saying goes, “no man is an island”. Our social bonds and close-knit ties are important buffers against stressful events (Cohen & Wills, 1985). The presence of a supportive network shapes an individual’s wellbeing as it provides a safe space to seek help and obtain encouragement as the world evolves in complexity and uncertainty.

For youths in Singapore, family and friends are the main sources of emotional and developmental support. Youths continue to list their family and friends as the first people they turn to when it comes to seeking advice for personal problems and important life decisions.

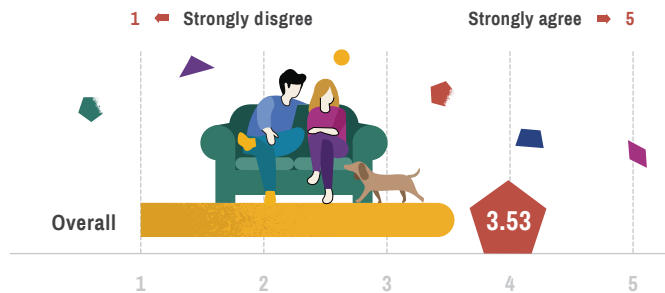
Committed to maintaining the strong bonds in their communities, young people are dedicating most of their leisure time to their immediate families and other relatives. They continue to enjoy a positive family environment as well as boast close and diverse friendships. This is reassuring, as both the quantity and quality of social interactions are instrumental in enhancing wellbeing and resilience (Ozbay et al., 2007).

Social ties can be likened to a safety net to catch our youths when they fall as well as a scaffold to help youths flourish. Strong communities will help foster confident youths who are able to surmount all obstacles and achieve their fullest potential.

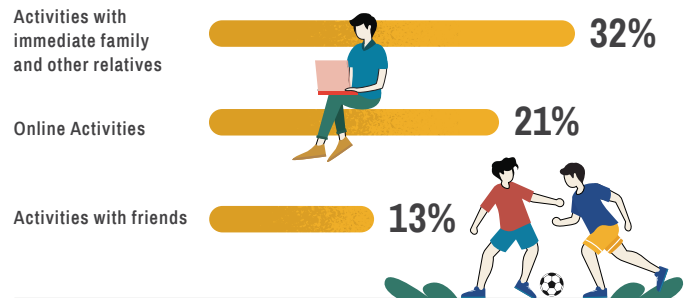
Unmarried youths most commonly confide in their **mothers**, while married youths turn to their **spouses**.



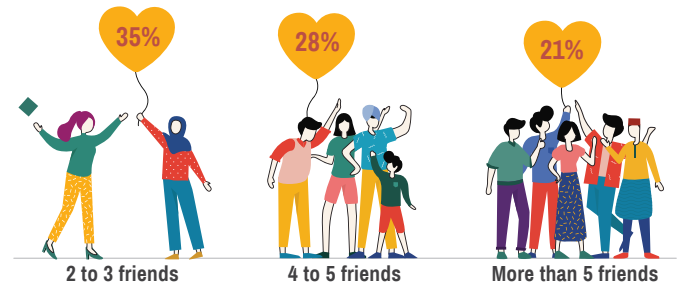
Despite a positive family environment, there is still room for families to provide **greater emotional support** to youths.



Youths spend the most time **with their immediate families and other relatives, on online activities, and with friends**.



Youths in Singapore report having **at least two to three close friends**.



Part A: Family Environment

Section A1: Family Support & Challenge

A supportive and challenging family environment is linked to positive developmental outcomes in adolescence (Rathunde, 2001) and continues to influence health and wellbeing outcomes into young adulthood (Chen et al., 2019). Youths in Singapore continue to report high levels of support and challenge over the years (**Tables A1 and A2**).



Question: To what extent do you agree with the following statements regarding your family of upbringing? In my family, (Based on a 5-pt scale, where 5="strongly agree", 3="neither agree nor disagree", & 1="strongly disagree".)

• **TABLE A1: MEAN RATINGS OF YOUTHS' LEVEL OF FAMILY SUPPORT OVER TIME**
(with standard deviations in parentheses)

| | 2010 | 2013 | 2016 | 2019 |
|---|--------------------|--------------------|--------------------|--------------------|
| | (n=1,268) | (n=2,843) | (n=3,531) | (n=3,392) |
| Family Support (Aggregate)^a | 4.29 (0.51) | 4.29 (0.68) | 4.28 (0.67) | 4.12 (0.71) |
| I feel appreciated for who I am | 4.24 (0.60) | 4.18 (0.84) | 4.23 (0.79) | 3.97 (0.90) |
| No matter what happens, I know I'll be loved and accepted | 4.36 (0.63) | 4.36 (0.77) | 4.29 (0.79) | 4.15 (0.87) |
| We are willing to help each other out when something needs to be done | 4.26 (0.64) | 4.35 (0.70) | 4.32 (0.72) | 4.25 (0.75) |

Note

a. Calculation of aggregate score is based on shortened question barrel in NYS 2019.



• **TABLE A2: MEAN RATINGS OF YOUTHS' LEVEL OF FAMILY CHALLENGE OVER TIME**
(with standard deviations in parentheses)

| | 2010 | 2013 | 2016 | 2019 |
|--|--------------------|--------------------|--------------------|--------------------|
| | (n=1,268) | (n=2,843) | (n=3,531) | (n=3,392) |
| Family Challenge (Aggregate)^a | 3.99 (0.55) | 4.11 (0.64) | 4.06 (0.65) | 3.99 (0.61) |
| I'm expected to do my best | 4.10 (0.73) | 4.22 (0.75) | 4.14 (0.78) | 4.12 (0.79) |
| I try to make other family members proud | 4.08 (0.69) | 4.20 (0.77) | 4.17 (0.79) | 4.10 (0.83) |
| I'm encouraged to get involved in activities outside school and work | 3.70 (0.87) | 3.89 (0.90) | 3.83 (0.93) | 3.71 (0.93) |
| I'm expected to use my time wisely | 4.10 (0.65) | 4.14 (0.76) | 4.08 (0.79) | 4.03 (0.79) |

Note

a. Calculation of aggregate score is based on shortened question barrel in NYS 2019.

Section A2: Family Environment Close relationships between youths and their parents promote and support positive youth development. Although family environment is generally positive, there is still room for the family to provide greater emotional support to youths (**Table A3**).

**Question: To what extent do you agree with the following statements regarding your family of upbringing?
(Based on a 5-pt scale, where 5="strongly agree", 3="neither agree nor disagree", & 1="strongly disagree".)**

• **TABLE A3: MEAN RATINGS OF YOUTHS' LEVEL OF FAMILY ENVIRONMENT BY AGE**
(with standard deviations in parentheses)

| | 15-19 | 20-24 | 25-29 | 30-34 | Overall |
|---|--------------------|--------------------|--------------------|--------------------|--------------------|
| | (n=716) | (n=804) | (n=926) | (n=946) | (n=3,392) |
| Family Environment (Aggregate) | 3.58 (0.74) | 3.50 (0.77) | 3.52 (0.74) | 3.52 (0.72) | 3.53 (0.74) |
| We cannot talk to each other about feeling sad ^a | 2.58 (1.12) | 2.64 (1.08) | 2.59 (1.04) | 2.55 (1.01) | 2.59 (1.06) |
| We don't get along well with each other ^a | 2.07 (0.98) | 2.08 (0.95) | 2.18 (0.96) | 2.18 (0.94) | 2.13 (0.96) |
| We avoid discussing our fears and concerns with each other ^a | 2.84 (1.12) | 2.89 (1.12) | 2.85 (1.06) | 2.90 (1.04) | 2.87 (1.08) |
| We confide in each other | 3.53 (1.00) | 3.44 (1.04) | 3.49 (1.00) | 3.52 (0.97) | 3.49 (1.00) |
| We express our feelings to each other | 3.53 (1.04) | 3.36 (1.08) | 3.42 (1.00) | 3.40 (1.01) | 3.43 (1.03) |
| We are able to make decisions about how to solve problems | 3.92 (0.82) | 3.85 (0.84) | 3.81 (0.84) | 3.85 (0.81) | 3.85 (0.83) |

Notes

This is a new scale introduced in NYS 2019.

a. These items were reverse coded in the aggregated score.

Part B: Friendship

Section B1: Number Of Close Friends

Apart from family relationships, the presence of close friendships and the ability to turn to these friends for advice or help is associated with better life satisfaction over life stages (Gillespie et al., 2015). While most youths in Singapore report having at least two to three close friends (**Table B1**), there is a small and consistent percentage of youths reporting no close friends. Similar to previous years, older youths tend to report relatively smaller groups of friends compared to younger youths (**Table B2**).

Question: Close friends are people you feel at ease with, can talk to about private matters, or call on for help... how many close friends do you have?

• **TABLE B1: YOUTHS' NUMBER OF CLOSE FRIENDS OVER TIME**

| | 2010 (n=1,268) | 2013 (n=2,843) | 2016 (n=3,531) | 2019 (n=3,392) |
|-------------|-------------------|-------------------|-------------------|-------------------|
| More than 5 | 19% | 26% | 20% | 21% |
| 4 to 5 | 27% | 30% | 29% | 28% |
| 2 to 3 | 45% | 32% | 36% | 35% |
| 1 | 9% | 8% | 9% | 10% |
| None | 1% | 4% | 6% | 6% |

• **TABLE B2: YOUTHS' NUMBER OF CLOSE FRIENDS BY AGE**

| | 15-19 (n=716) | 20-24 (n=804) | 25-29 (n=926) | 30-34 (n=946) | Overall (n=3,392) |
|-------------|------------------|------------------|------------------|------------------|----------------------|
| More than 5 | 29% | 23% | 19% | 15% | 21% |
| 4 to 5 | 30% | 29% | 27% | 27% | 28% |
| 2 to 3 | 29% | 35% | 35% | 37% | 35% |
| 1 | 7% | 8% | 11% | 13% | 10% |
| None | 5% | 5% | 7% | 8% | 6% |

**Section B2:
Sources Of
Close Friends**

Regardless of age, school remains the top source of close friends for youths over time. This is followed by workplaces among older youths and through other friends/social networks among younger youths (**Table B3**).

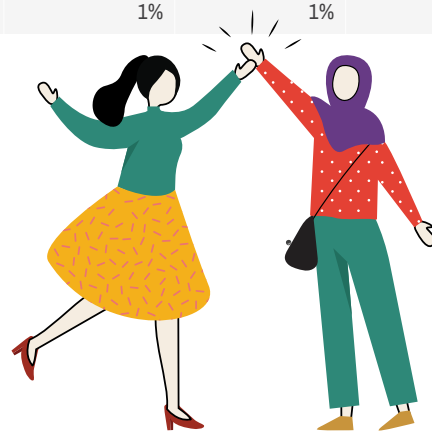
Question: Select up to three ways in which you met your close friends.

• **TABLE B3: YOUTHS' SOURCES OF CLOSE FRIENDS BY AGE**

| | 15-19 (n=716) | 20-24 (n=804) | 25-29 (n=926) | 30-34 (n=946) | Overall (n=3,392) |
|---------------------------------------|------------------|------------------|------------------|------------------|----------------------|
| School | 91% | 89% | 79% | 73% | 82% |
| Workplace | 5% | 14% | 35% | 43% | 26% |
| Through other friends/social networks | 19% | 15% | 14% | 13% | 15% |
| National Service | 2% | 18% | 15% | 11% | 12% |
| Hobby/interest groups | 12% | 9% | 8% | 6% | 9% |
| Religious community | 10% | 11% | 8% | 8% | 9% |
| Internet | 13% | 7% | 5% | 4% | 7% |
| Neighbourhood | 11% | 6% | 5% | 5% | 6% |
| Sports activities | 11% | 6% | 5% | 4% | 6% |
| Public places/gatherings | 4% | 4% | 4% | 3% | 4% |
| Through family members/relatives | 5% | 3% | 4% | 4% | 4% |
| Others | 1% | 1% | 1% | 1% | 1% |

Notes

This is a multiple response item, hence figures will not sum to 100%. The upper-bound survey population figures are reflected in this table.



Section B3: Friendship Diversity Friendship diversity has continued to improve from 2013, with more youths reporting having close friends of a different race, nationality, and religion in 2019 (**Table B4**). Younger youths are more likely to report having close friends from diverse backgrounds compared to older youths (**Table B5**).

Question: Do you have close friends who are of a different race, nationality, religion, income group, or educational background?

• **TABLE B4: FRIENDSHIP DIVERSITY OVER TIME**

| | 2013 (n=2,723) | 2016 (n=3,324) | 2019 (n=3,392) |
|---|-------------------|-------------------|-------------------|
| Different race | 53% | 60% | 62% |
| Different nationality | 42% | 45% | 47% |
| Different religion | 80% | 80% | 82% |
| Different income group ^a | NA | 85% | 84% |
| Different educational background ^a | NA | 72% | 69% |

Note

a. Items are new to NYS 2016.

• **TABLE B5: FRIENDSHIP DIVERSITY BY AGE**

| | 15-19 (n=716) | 20-24 (n=804) | 25-29 (n=926) | 30-34 (n=946) | Overall (n=3,392) |
|----------------------------------|------------------|------------------|------------------|------------------|----------------------|
| Different race | 77% | 66% | 57% | 51% | 62% |
| Different nationality | 59% | 47% | 43% | 42% | 47% |
| Different religion | 88% | 85% | 81% | 75% | 82% |
| Different income group | 89% | 86% | 82% | 79% | 84% |
| Different educational background | 71% | 72% | 69% | 67% | 69% |

• **TABLE B6: FRIENDSHIP DIVERSITY BY RACE**

| | Chinese (n=2,429) | Malay (n=566) | Indian (n=305) | Others (n=92) | Overall (n=3,392) |
|----------------------------------|----------------------|------------------|-------------------|------------------|----------------------|
| Different race | 53% | 80% | 85% | 93% | 62% |
| Different nationality | 46% | 43% | 56% | 68% | 47% |
| Different religion | 82% | 77% | 86% | 87% | 82% |
| Different income group | 84% | 81% | 86% | 87% | 84% |
| Different educational background | 65% | 83% | 77% | 78% | 69% |



Part C: Living Arrangements & Behaviours

Section C1: Advice-Seeking Behaviour

Majority of youths continue to have someone to turn to for advice on personal problems or important life decisions (**Tables C1 and C3**). When it comes to seeking advice on both personal problems and important life decisions, unmarried youths are most likely to turn to their mothers, whereas married youths are most likely to turn to their spouses (**Tables C2 and C4**).



Question: Select up to three most important persons you would turn to when you are worried or troubled with a personal problem, with the 1st person being the most important person.

• **TABLE C1: FIRST PERSON YOUTHS TURN TO FOR ADVICE REGARDING A PERSONAL PROBLEM OVER TIME**

| | 2013 (n=2,843) | 2016 (n=3,531) | 2019 (n=3,392) |
|--------------------------|-------------------|-------------------|-------------------|
| Father | 10% | 9% | 9% |
| Mother | 28% | 28% | 28% |
| Boy/Girlfriend or Spouse | 29% | 31% | 33% |
| Close or Best friend | 21% | 23% | 19% |
| Others | 9% | 9% | 8% |
| None | 4% | 1% | 4% |

• **TABLE C2: FIRST PERSON YOUTHS TURN TO FOR ADVICE REGARDING A PERSONAL PROBLEM BY MARITAL STATUS**

| | Unmarried Youths (n=2,500) | Married Youths (n=851) |
|--------------------------|-------------------------------|---------------------------|
| Father | 11% | 4% |
| Mother | 34% | 12% |
| Boy/Girlfriend or Spouse | 19% | 74% |
| Close or Best friend | 24% | 4% |
| Others | 9% | 4% |
| None | 4% | 2% |

Question: Select up to three most important persons you would turn to for advice on important life decisions, with the 1st person being the most important person.

• **TABLE C3: FIRST PERSON YOUTHS TURN TO FOR ADVICE REGARDING A LIFE DECISION OVER TIME**

| | 2013 (n=2,843) | 2016 (n=3,531) | 2019 (n=3,392) |
|--------------------------|-------------------|-------------------|-------------------|
| Father | 19% | 19% | 19% |
| Mother | 32% | 34% | 30% |
| Boy/Girlfriend or Spouse | 25% | 24% | 27% |
| Close or Best friend | 10% | 11% | 9% |
| Others | 10% | 11% | 12% |
| None | 5% | 1% | 5% |

• **TABLE C4: FIRST PERSON YOUTHS TURN TO FOR ADVICE REGARDING A LIFE DECISION BY MARITAL STATUS**

| | Unmarried Youths (n=2,500) | Married Youths (n=851) |
|--------------------------|-------------------------------|---------------------------|
| Father | 22% | 9% |
| Mother | 36% | 11% |
| Boy/Girlfriend or Spouse | 12% | 70% |
| Close or Best friend | 11% | 2% |
| Others | 14% | 5% |
| None | 5% | 3% |

Section C2: Living Arrangements Over Time

Youths' household living arrangements have stayed consistent over time. The majority of unmarried youths live with their parents while the majority of married youths live with their spouses (**Tables C5 and C6**).

Question: How many persons in each of the following categories currently live with you in your household?

• **TABLE C5: LIVING ARRANGEMENTS OF UNMARRIED YOUTHS OVER TIME**

| | 2010 | 2013 | 2016 | 2019 |
|--------------------|---------|-----------|-----------|-----------|
| | (n=948) | (n=2,089) | (n=2,570) | (n=2,500) |
| Parent(s) | 94% | 97% | 97% | 95% |
| Sibling(s) | 81% | 72% | 68% | 66% |
| Grandparent(s) | 11% | 13% | 10% | 13% |
| Boy/Girlfriend | 1% | 1% | 1% | 1% |
| Child/Children | 0% | 1% | 1% | 1% |
| Relative(s) | 6% | 5% | 5% | 4% |
| Domestic helper(s) | 13% | 11% | 10% | 11% |

Notes

This is a multiple response item, hence figures will not sum to 100%.
The overall unmarried survey population figures are reflected in this table.

• **TABLE C6: LIVING ARRANGEMENTS OF MARRIED YOUTHS OVER TIME**

| | 2010 | 2013 | 2016 | 2019 |
|--------------------|---------|---------|---------|---------|
| | (n=320) | (n=713) | (n=889) | (n=851) |
| Parent(s) | 40% | 37% | 31% | 24% |
| Sibling(s) | 19% | 18% | 15% | 9% |
| Grandparent(s) | 4% | 2% | 2% | 2% |
| Spouse | 93% | 89% | 93% | 92% |
| Child/Children | 67% | 61% | 58% | 54% |
| Relative(s) | 4% | 2% | 2% | 1% |
| Domestic helper(s) | 13% | 16% | 13% | 13% |

Notes

This is a multiple response item, hence figures will not sum to 100%.
The overall married survey population figures are reflected in this table.

Part D: Non-School/Work Activities

Section D1: Time Spent On Non-School/ Work Activities

In their leisure time, youths continue to spend the most amount of time with their families. This is followed by online activities, learning activities, and activities with friends (**Table D1**). Frequent and diverse participation in leisure activities can have a positive impact on one's wellbeing (Shin & You, 2013). Youths of all age groups are similarly likely to prioritise spending their leisure time with immediate families and relatives, on online activities, and friends (**Table D2**). Reflecting differences in life stages, a greater proportion of younger youths report spending time online or on learning activities, while more older youths report spending time with family.

**Question: On average, how many hours a week do you spend on the following activities outside of school and work?
(Please provide your estimate.)**

• **TABLE D1: PROPORTION OF TIME SPENT PER WEEK ON NON-SCHOOL/WORK ACTIVITIES OVER TIME**

| | 2013 (n=2,843) | 2016 (n=3,531) | 2019 (n=3,392) |
|---|-------------------|-------------------|-------------------|
| Average Leisure Time^a | 40 | 49 | 43 |
| Activities with immediate family and other relatives ^b (e.g., going out, having dinner together) | 26% | 33% | 32% |
| Online activities (e.g., gaming, chatting, social networking, reading blogs) | 25% | 23% | 21% |
| Activities with friends (e.g., movies, hanging out, concerts) | 19% | 16% | 13% |
| Learning activities (e.g., reading, studying or doing homework, excluding school hours) | 19% | 14% | 13% |
| Activities with boyfriend/girlfriend ^c (e.g., dating, hanging out) | NA | NA | 10% |
| Physical activities (e.g., exercising or playing sports) | 11% | 9% | 8% |
| Volunteer activities and/or community projects (e.g., helping in a welfare home or a place of worship, voluntary welfare organisations, grassroots activities) | 4% | 2% | 2% |
| Entrepreneurship activities (e.g., business planning, running stalls, selling items & services online) | 4% | 3% | 2% |

Notes

The upper-bound survey population figures are reflected in this table.

a. Proportion of time spent is calculated by taking the number of hours reported for each activity over the total number of hours reported for all non-school/work activities.

b. In NYS 2010 and 2013, family was captured as parents and other relatives. NYS 2016 rephrased the example used to more accurately capture activities with immediate family including one's siblings and spouse, and separately measured activities with other relatives.

c. Item is new to NYS 2019.

• **TABLE D2: PROPORTION OF TIME SPENT PER WEEK ON NON-SCHOOL/WORK ACTIVITIES BY AGE**

| | 15-19 (n=716) | 20-24 (n=804) | 25-29 (n=926) | 30-34 (n=946) | Overall (n=3,392) |
|---|------------------|------------------|------------------|------------------|----------------------|
| Average Leisure Time^a | 53 | 49 | 37 | 35 | 43 |
| Activities with immediate family and other relatives ^b (e.g., going out, having dinner together) | 25% | 25% | 32% | 44% | 32% |
| Online activities (e.g., gaming, chatting, social networking, reading blogs) | 24% | 23% | 19% | 18% | 21% |
| Activities with friends (e.g., movies, hanging out, concerts) | 14% | 14% | 13% | 10% | 13% |
| Learning activities (e.g., reading, studying or doing homework, excluding school hours) | 21% | 16% | 9% | 7% | 13% |
| Activities with boyfriend/girlfriend ^c (e.g., dating, hanging out) | 4% | 10% | 14% | 9% | 10% |
| Physical activities (e.g., exercising or playing sports) | 8% | 8% | 8% | 8% | 8% |
| Volunteer activities and/or community projects (e.g., helping in a welfare home or a place of worship, voluntary welfare organisations, grassroots activities) | 2% | 2% | 2% | 2% | 2% |
| Entrepreneurship activities (e.g., business planning, running stalls, selling items & services online) | 1% | 1% | 2% | 2% | 2% |

Notes

The upper-bound survey population figures are reflected in this table.

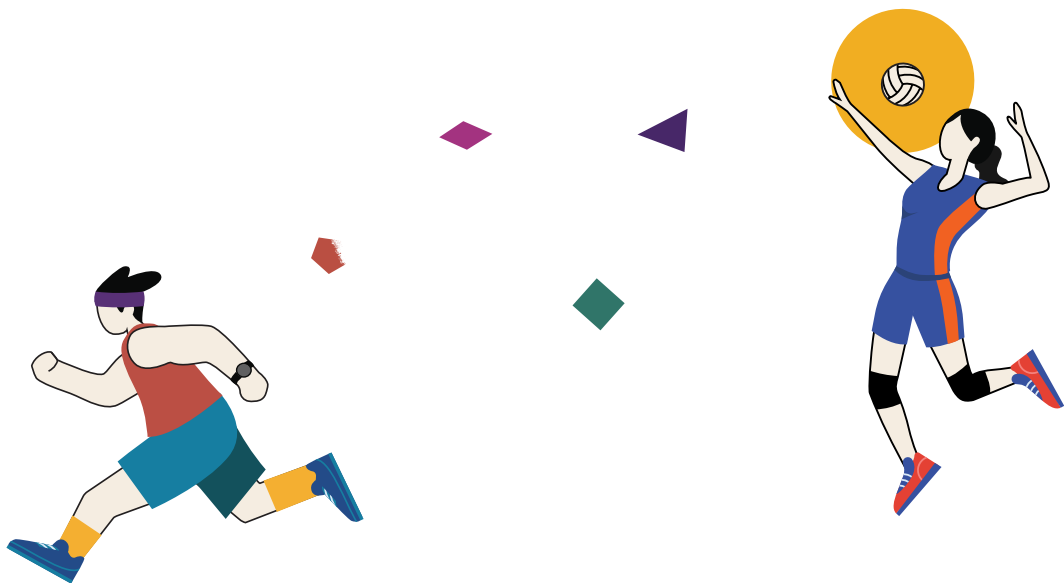
a. Proportion of time spent is calculated by taking the number of hours reported for each activity over the total number of hours reported for all non-school/work activities.

b. In NYS 2010 and 2013, family was captured as parents and other relatives. NYS 2016 rephrased the example used to more accurately capture activities with immediate family including one's siblings and spouse, and separately measured activities with other relatives.

c. Item is new to NYS 2019.

References

- Chen, Y., Haines, J., Charlton, B. M., & VanderWeele, T. J. (2019). Positive parenting improves multiple aspects of health and well-being in young adulthood. *Nature Human Behaviour*, 3(7), 684–691. <https://doi.org/10.1038/s41562-019-0602-x>
- Cohen, S., & Wills, T. A. (1985). Stress, social support, and the buffering hypothesis. *Psychological Bulletin*, 98(2), 310–357. <https://doi.org/10.1037/0033-2909.98.2.310>
- Gillespie, B. J., Lever, J., Frederick, D., Royce, T. (2015). Close adult friendships, gender, and the life cycle. *Journal of Social and Personal Relationships*, 32(6), 709–736. <https://doi.org/10.1177%2F0265407514546977>
- Ozbay, F., Johnson, D. C., Dimoulas, E., Morgan, C. A., Charney, D., & Southwick, S. (2007). Social support and resilience to stress: From neurobiology to clinical practice. *Psychiatry*, 4(5), 35–40.
- Rathunde, K. (2001). Family context and the development of undivided interest: A longitudinal study of family support and challenge and adolescents' quality of experience. *Applied Developmental Science*, 5(3), 158–171. https://doi.org/10.1207/S1532480XADS0503_4
- Southwick, S. M., Lauren, S., Krystal, J., Charney, D., Mayes, L., & Pietrzak, R. (2016). Why are some individuals more resilient than others: The role of social support. *World Psychiatry*, 15(1), 77–79. <https://doi.org/10.1002/wps.20282>
- Shin, K., & You, S. (2013). Leisure type, leisure satisfaction and adolescents' psychological wellbeing. *Journal of Pacific Rim Psychology*, 7(2), 53–62. <https://doi.org/10.1017/prp.2013.6>



About the National Youth Survey

The NYS represents a milestone in Singapore’s youth research with its resource-based approach that focuses on the support youths require for societal engagement (social capital) and individual development (human capital).

The National Youth Indicators Framework (NYIF) (Ho & Yip, 2003) was formulated to provide a comprehensive, systematic, and theoretically-grounded assessment of youths in Singapore. The NYIF draws from the existing research literature, policy-relevant indicators, and youth development models. It spans six domains of social and human capital. **Table I** summarises the framework.

• **TABLE I: NATIONAL YOUTH INDICATORS FRAMEWORK**

| | Social Capital (Grootaert & van Bastelaer, 2002; Putnam, 2000) | Human Capital (Organisation for Economic Co-operation and Development, 2001; World Economic Forum, 2017) |
|-------------------|--|--|
| Definition | Social capital refers to the relationships within and between groups, and the shared norms and trust that govern these interactions. | Human capital refers to the skills, competencies, and attitudes of individuals, which in turn create personal, social, and economic wellbeing. |
| Domains | <ul style="list-style-type: none"> • Social support • Social participation • Values & attitudes | <ul style="list-style-type: none"> • Education • Employment • Wellbeing |
| Focus | The power of relationships | The human potential of young people |

NYS 2019 adopted a random (i.e., probability-based) sampling method to ensure responses are representative of the resident youth population aged 15 to 34 years old.

The fieldwork period spanned September to November 2019. A total of 3,392 youths were successfully surveyed, of which 227 were surveyed at their households. Demographic proportions of NYS respondents adhered closely to the youth population.

Table II presents the profile of respondents from NYS 2002, 2005, 2010, 2013, 2016, and 2019. Figures referenced in all tables in the publication (with the exception of figures from NYS 2002^a) were weighted according to interlocking matrices of age, gender, and race of the respective youth populations.

Note

a. Figures from NYS 2002 were not weighted due to the non-standard age bands used.



• **TABLE II: PROFILE OF NYS RESPONDENTS**

| | | NYS 2002 (n=1,504) | NYS 2005 (n=1,504) | NYS 2010 (n=1,268) | NYS 2013 (n=2,843) | NYS 2016 (n=3,531) | NYS 2019 (n=3,392) | Latest Youth Population ^a |
|----------------|------------------------------------|---|-----------------------|-----------------------|-----------------------|-----------------------|-----------------------|---|
| Age | 15-19 | NYS 2002 utilised non-standard age bands | 33% | 24% | 24% | 23% | 21% | 21% |
| | 20-24 | | 31% | 23% | 25% | 25% | 24% | 24% |
| | 25-29 | | 36% | 25% | 24% | 25% | 27% | 27% |
| | 30-34 ^b | | NA | NA | 28% | 28% | 27% | 28% |
| Gender | Male | 50% | 50% | 49% | 49% | 49% | 50% | 50% |
| | Female | 50% | 50% | 51% | 51% | 51% | 50% | 50% |
| Race | Chinese | 77% | 75% | 72% | 72% | 72% | 72% | 72% |
| | Malay | 15% | 15% | 15% | 16% | 16% | 17% | 17% |
| | Indian | 7% | 9% | 10% | 10% | 9% | 9% | 9% |
| | Others | 1% | 1% | 4% | 3% | 3% | 3% | 3% |
| Nationality | Singaporean | 93% | 90% | 86% | 91% | 94% | 93% | 86% |
| | Permanent Resident | 7% | 10% | 14% | 10% | 6% | 7% | 14% |
| Marital Status | Single | 83% | 85% | 74% | 74% | 74% | 74% | 74% |
| | Married | 17% | 14% | 25% | 25% | 26% | 25% | 25% |
| | Divorced/Separated/Widowed | 0% | 1% | 1% | 1% | 1% | 1% | 1% |
| Religion | Buddhism | 35% | 32% | 36% | 25% | 24% | 22% | 28% |
| | Islam | 16% | 17% | 18% | 19% | 20% | 21% | 18% |
| | Christianity | 16% | 16% | 15% | 19% | 19% | 20% | 18% |
| | Hinduism | 5% | 6% | 6% | 6% | 5% | 5% | 5% |
| | Taoism/Traditional Chinese Beliefs | 6% | 6% | 7% | 7% | 6% | 5% | 7% |
| | Other Religions | 2% | 1% | 3% | 1% | 0% | 1% | 0% |
| | No Religion | 21% | 21% | 15% | 23% | 25% | 27% | 23% |
| Dwelling | HDB 1-2 rooms | 5% | 3% | 5% | 3% | 5% | 4% | 3% |
| | HDB 3 rooms | 26% | 24% | 24% | 14% | 14% | 14% | 12% |
| | HDB 4 rooms | 33% | 43% | 34% | 37% | 38% | 35% | 35% |
| | HDB 5 rooms, executive, & above | 24% | 19% | 26% | 31% | 29% | 30% | 29% |
| | Private flat & condominium | 12% | 11% | 3% | 10% | 9% | 12% | 13% |
| | Private house & bungalow | | | 9% | 6% | 4% | 4% | 6% |
| | Others | 0% | NA | NA | 0% | 0% | 1% | 0% |

Notes

a. Latest youth population refers to the most recent available data from the Department of Statistics (DOS) at the time of fieldwork – age, gender, race, and dwelling (DOS, 2019a) as well as nationality (DOS, 2019b), marital status, and religion (DOS, 2016).

b. The 30-34 age band was included from NYS 2010.

References

Department of Statistics. (2016). *General Household Survey 2015*. <https://www.singstat.gov.sg/-/media/files/publications/ghs/ghs2015/ghs2015.pdf>

Department of Statistics. (2019a). *Population Trends 2019*. <https://www.singstat.gov.sg/-/media/files/publications/population/population2019.pdf>

Department of Statistics. (2019b). *M810671 - Singapore citizens by age group, ethnic group and sex, end June, annual*. <https://www.tablebuilder.singstat.gov.sg/publicfacing/mainMenu.action>

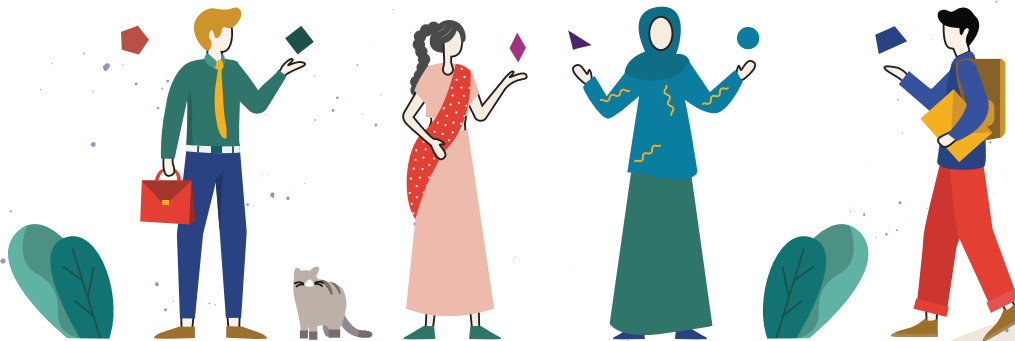
Grootaert, C., & van Bastelaer, T. (2002). Social capital: From definition to measurement. In C. Grootaert & T. van Bastelaer (Eds.), *Understanding and measuring social capital: A multidisciplinary tool for practitioners*. *Directions in Development* (pp. 1-16). World Bank.

Ho, K. C., & Yip, J. (2003). *YOUTH.sg: The State of Youth in Singapore*. National Youth Council.

Organisation for Economic Co-operation and Development. (2001). *The well-being of nations: The role of human and social capital*. OECD Publishing. <https://www.oecd.org/site/worldforum/33703702.pdf>

Putnam, R. D. (2000). *Bowling alone: The collapse and revival of American community*. Simon & Schuster.

World Economic Forum. (2017). *The Global Human Capital Report 2017*. http://www3.weforum.org/docs/WEF_Global_Human_Capital_Report_2017.pdf





NATIONAL
YOUTH
COUNCIL
SINGAPORE

WE HEAR **Y**OUTH
HERE FOR **Y**OUTH

BLK 490 LORONG 6 TOA PAYOH
HDB HUB BIZ THREE #04-10
SINGAPORE 310490

E: NYC_ENQUIRIES@NYC.GOV.SG
WWW.NYC.GOV.SG

Also part of NYC



**Outward Bound
Singapore**



**YOUTH CORPS
SINGAPORE**

